



TOKYO METROPOLITAN UNIVERSITY

TMU

KEY FACTS

Over **9,000** Full-time Students:
including 7,000 undergraduate
and 2,000 graduate students

98 % of Employment rate after
graduation (undergraduate students)

Over **500** International Students:
Enrollment has been increasing every year

About **700** Faculty members:
including over 280 Professors

450 Staff members

Tokyo Metropolitan University is a new university, which was formed through the reorganization and integration of four metropolitan universities in April 2005, namely Tokyo Metropolitan University, Tokyo Metropolitan Institute of Technology, Tokyo Metropolitan University of Health Sciences, and Tokyo Metropolitan College.

Tokyo Metropolitan University has been engaged in a wide range of academic disciplines in 23 departments, provides an open learning environment towards elucidation and resolution of the unknown, and is promoting interdisciplinary cooperation across the boundary.

We are pioneering innovations, originating in Tokyo, that impact our future society—the capital and the leading city of Japan with a population of 13 million.



LOCATION

Application Fee and Tuition Fee

Application Fee	[Faculty]	¥ 17,000
	[Graduate School]	¥ 30,000
Course Expenses and Fees	[Enrollment Fee]	¥ 282,000
	[Tuition Fee]	¥ 520,800 (annual amount)*

* Law School: ¥ 663,000 (annual amount)

Tuition Fee Reduction and Exemption System

A reduction and exemption system that reduces or exempts tuition and other expenses, and a installment payment system are available.

Scholarship System

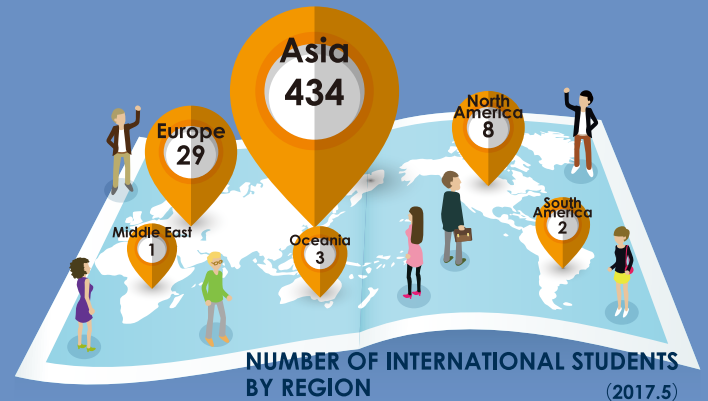
For students with motivation and abilities, a scholarship system that provides financial aid is available.

- Japanese government scholarship (available for graduate students only)
- Tokyo Metropolitan government scholarship (available for graduate students only)
- Private / local public foundation scholarships

Student Dormitory

- [On Campus] • University Dormitory (¥4,700 / month)
- International House (Approximately ¥30,000 / month)

- [Off Campus] • International Student House [Chofu, Hino] (Approximately ¥50,000 - ¥60,000 / month)



Academic Calendar

4 APR	Scholarship Orientation International Student Orientation Entrance Ceremony Welcome Party First Semester Courses Start Intercultural Understanding Seminar (Classroom Seminar) Cross-Cultural Understanding Seminar	8 AUG	Summer Vacation University Briefing Session (Open Campus)	12 DEC	International Party Winter Vacation
6 JUN	International Student Seminar (1st)	10 OCT	Scholarship Orientation Second Semester Courses Start International Student Orientation Welcome Party Intercultural Understanding Seminar (Classroom Lecture) Cross-Cultural Understanding Seminar	1 JAN	End-of-Year Examinations Farewell Party
7 JUL	University Briefing Session (Open Campus) First Semester Final Examinations Farewell Party	11 NOV	University Festival International Student Seminar (2nd)	2 FEB	Spring Vacation
				3 MAR	Hina Matsuri (Doll's Festival) Graduation Ceremony

- **Tutoring System** Tutors are assigned to for new international students (up to 10 months)
- **Japanese Language Classes** Classes are available from beginner to advanced level (N5—N1+)
- **Japanese Academic Writing Support** One-on-one assistance in thesis/report preparation in Japanese language
- **International Students Advisor** International student advisors give advice to international students about various concerns and problems such as life in Japan, academic matters and interpersonal affairs.
- **Japanese Language Navigator** Supports Japanese language studies at the International Students Exchange Office

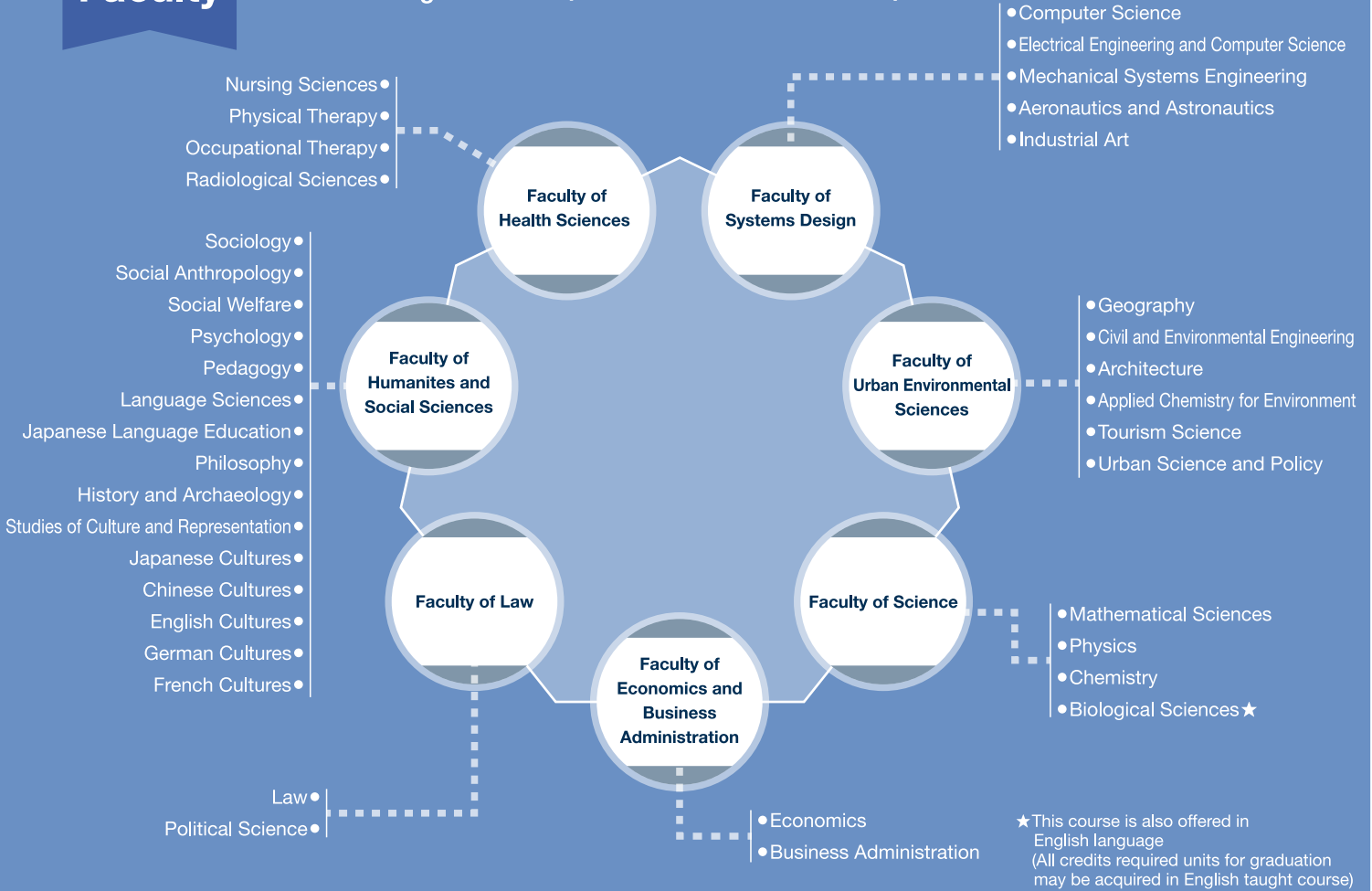
Various International Student Support Services

CONTACT US E-mail: ryugawww@tmu.ac.jp

(International Affairs Office, Tokyo Metropolitan University)

Faculty

Bachelor's Degree Course (Standard Duration : 4 Years)



Graduate School

Master's Course (Standard Duration: 2 Years)

Doctor's Course (Standard Duration: 3 Years)

Research Student Program (6 Months or 12 Months)

